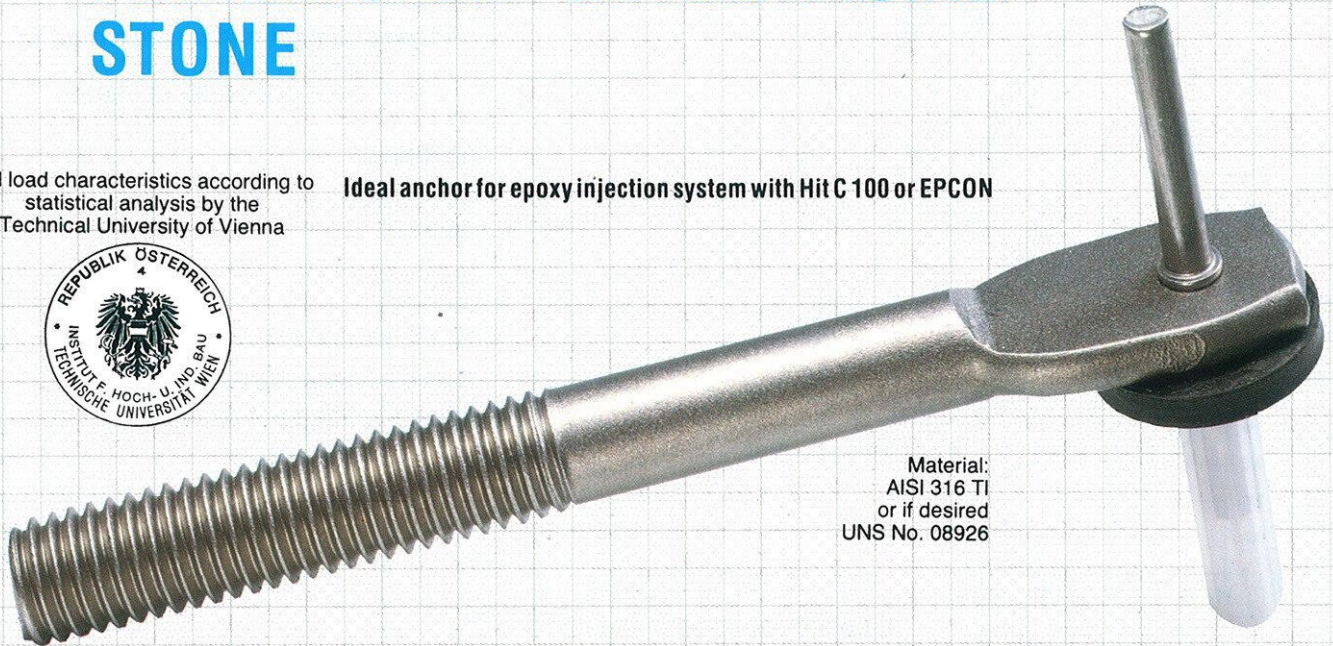


BRACKET-ANCHOR*

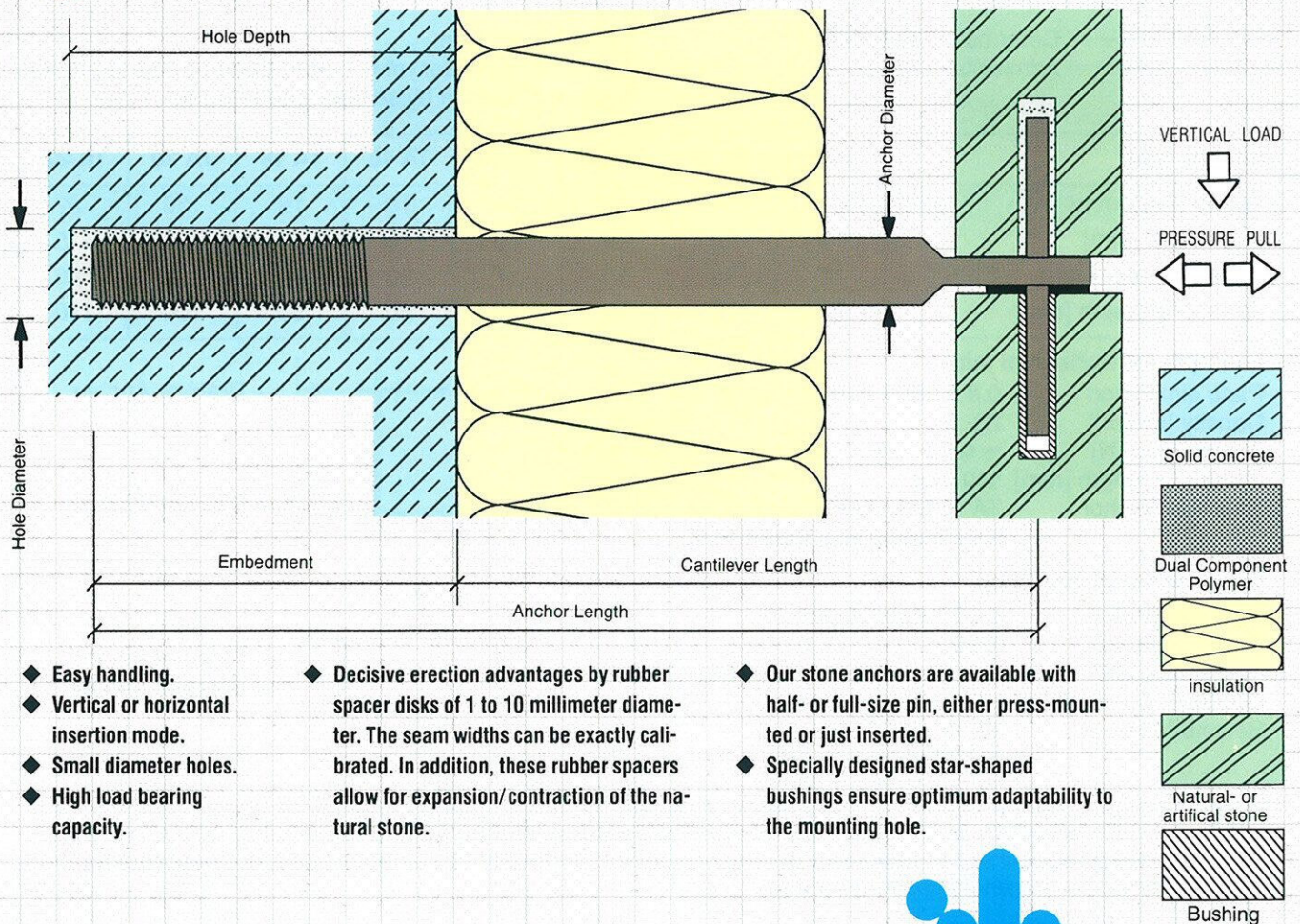
FOR NATURAL- OR ARTIFICIAL STONE

*All load characteristics according to statistical analysis by the Technical University of Vienna

Ideal anchor for epoxy injection system with Hit C 100 or EPCON



Material:
AISI 316 TI
or if desired
UNS No. 08926



- ◆ Easy handling.
- ◆ Vertical or horizontal insertion mode.
- ◆ Small diameter holes.
- ◆ High load bearing capacity.
- ◆ Decisive erection advantages by rubber spacer disks of 1 to 10 millimeter diameter. The seam widths can be exactly calibrated. In addition, these rubber spacers allow for expansion/contraction of the natural stone.
- ◆ Our stone anchors are available with half- or full-size pin, either press-mounted or just inserted.
- ◆ Specially designed star-shaped bushings ensure optimum adaptability to the mounting hole.

POINTNER
FIXING SYSTEMS

Bracket-Anchor TA 8 to TA 22



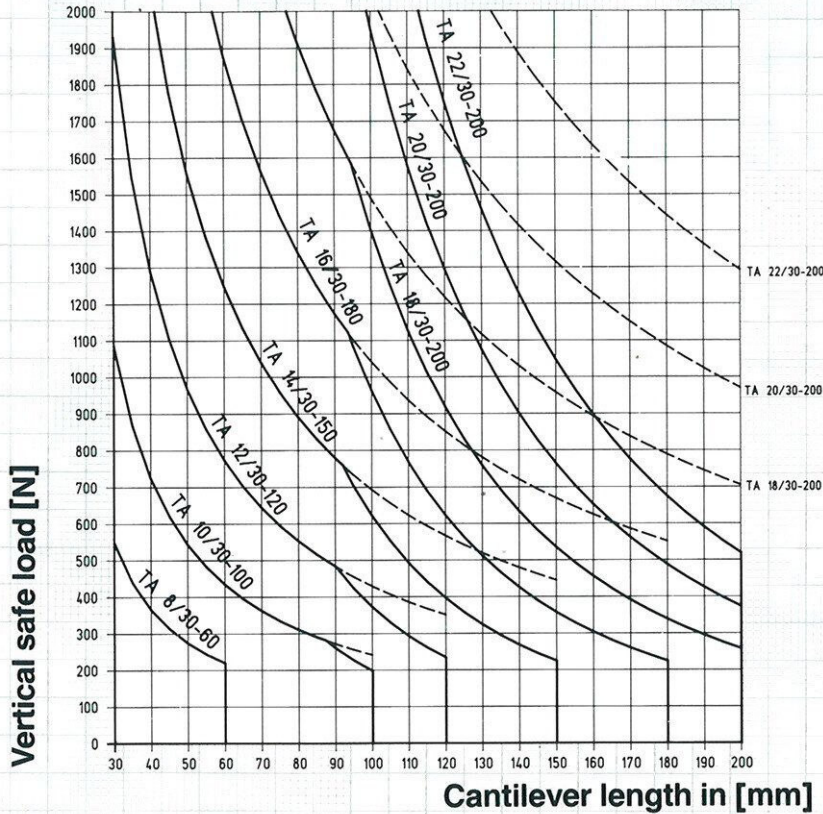
All load characteristics according to statistical analysis by the Technical University of Vienna

Materials:

Solid concrete:
3500 psi

Stainless steel:
AISI 316 Ti
(0.2% yield strength \geq 32.6 ksi)

Epoxy Injection System:
Hilti-Hit or EPCON® or equivalent



— = Deformation less than 1 mm
- - - = Admissible stress

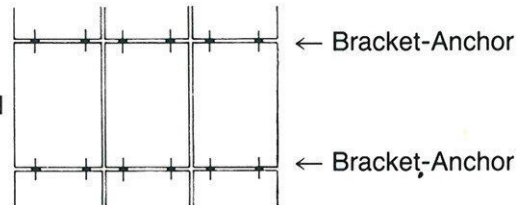
Design criteria:

Steel: Safety factor refer to yield strength (0.2%) = 1,62
Max. deformation by service load less than 1 mm

Anchor type	TA 8	TA 10	TA 12	TA 14	TA 16	TA 18	TA 20	TA 22
Anchor Dia. [mm]	8	10	12	14	16	18	20	22
Beamthick [mm]	3	4	5	5	5	5	5	5
Hole Diameter [mm]	10	12	15	17	20	22	24	26
Anchoring Depth [mm]	70	70	70	70	80	90	100	110

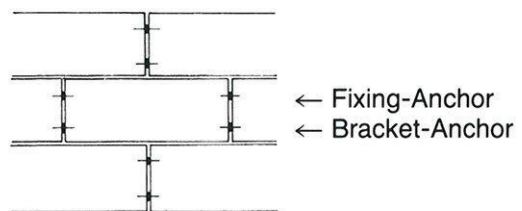
Example for horizontal joint

Plate dimension 0.6 / 1.20 / 0.04 m
Density [kN/m³] 28
Anchor load [N] = $0.5 \times 0.6 \times 1.20 \times 0.04 \times 28 = 403$ N
Cantilever length [mm] 140 mm
Selected Anchor TA 16 (see table, deformation less than 1 mm)



Example for vertical joint

Plate dimension 0.60 / 1.50 / 0.04 m
Density [kN/m³] 28,0
Anchor load [N] = $0,60 \times 1,50 \times 0,04 \times 28 = 1008$ N
Cantilever length [mm] 140 mm
Selected Anchor TA 18 (see Table, deformation less than 1 mm)



We reserve the right to make alterations, especially where necessitated by technical developments or changes in availability. The information contained in this data sheet, which in any case provides no guarantee of particular characteristics, has been compiled to the best of our knowledge but is given without any obligation on our part. Our liability is determined solely by the individual contract terms, in particular by our general conditions of sale.

Jan. 92



Plentznerstr. 16, A-4810 Gmunden
Tel.: +43-7612-64638 Fax: +43-7612-70929
Email: fixingsystems@aon.at

www.stonefixing.com